



Associate Parliamentary Limb Loss Group

for the Promotion of the Prevention of Limb Loss and of the Provision of Prosthetic, Orthotic, Wheelchair/Special Seating, Medical and other vital Rehabilitation Services to persons of all ages suffering Limb Loss and associated Complex Physical Disabilities in the United Kingdom and Internationally



LONDON 2012 OLYMPIC GAMES AND PARALYMPIC GAMES ACCESSIBILITY



The Members of the APLLG are delighted to share with others, and to help spread the good word, the Power Point presentation made to them by Margaret Hickish Advisor to the London Mayor.



The APLLG

congratulate Margaret and her colleagues on the excellence of their outreach.



**Feedback about this news release or any other item can be provided by
visiting the **Associate Parliamentary Limb Loss Group Website** at
www.apllg.eu or via email: feedback@apllg.eu**

---ENDS---



London 2012

**Olympic Games and Paralympic
Games Accessibility**

Presentation to

**Associate Parliamentary Limb Loss
Group**

6 July 2011

Margaret Hickish,

Advisor on the Paralympic Games , GLA

Bid Commitments

“To host an inspirational, safe and inclusive Olympic Games and Paralympic Games and leave a sustainable legacy for London and the UK.”

- **the most accessible Games ever...**
- **inclusive, so everyone can use them safely, easily and with dignity...**
- **promote really good and positive practices, not just obey minimum standards...**

Mayor's Commitment

I want everyone who comes to London to enjoy every aspect of their stay, including Paralympians, disabled spectators and anyone who may have difficulty moving around the capital.....

I urge all London businesses, including shops, restaurants and hotels, to start thinking now about how they can make their services as accessible as possible in time for the 2012 Games.

Boris Johnston Mayor of London Beijing 2008

Scale

- ❑ 26 World Champs (20 Paras)
- ❑ 36 Competition Venues
- ❑ 41 Training Venues
- ❑ 70 Non Comp Venues
- ❑ 15,000 Athletes
- ❑ 25,000 Media & Broadcast
- ❑ 10 Million Tickets
- ❑ Estimated 3% Increase in Overseas Visitors



Accessible London

- Southbank Improvements
- Inclusive London
- Welcoming visitors to London
- Inclusive Hospitality - E-learning
- Business guidance



Learning from Previous Games

老幼病残孕服务用车

The Elder, the Little, the Sick, the Disabled
and the Pregnant vehicle



D	I	S	A	B	L	E	D	T	S
G	H	P	A	T	O	I	L	E	T
V	E	P	A	O	S	R	I	A	S
X	E	N	E	W	T	D	D	S	P
A	N	L	T	E	A	H	I	E	O
B	U	B	B	L	E	T	E	E	R
A	C	S	E	M	E	C	E	R	T
B	E	A	C	H	U	M	A	R	S
Y	A	C	H	T	T	H	E	R	R
I	P	C	H	A	N	G	I	N	G

New Venues



Innovation



Consultation - Testing Accessibility



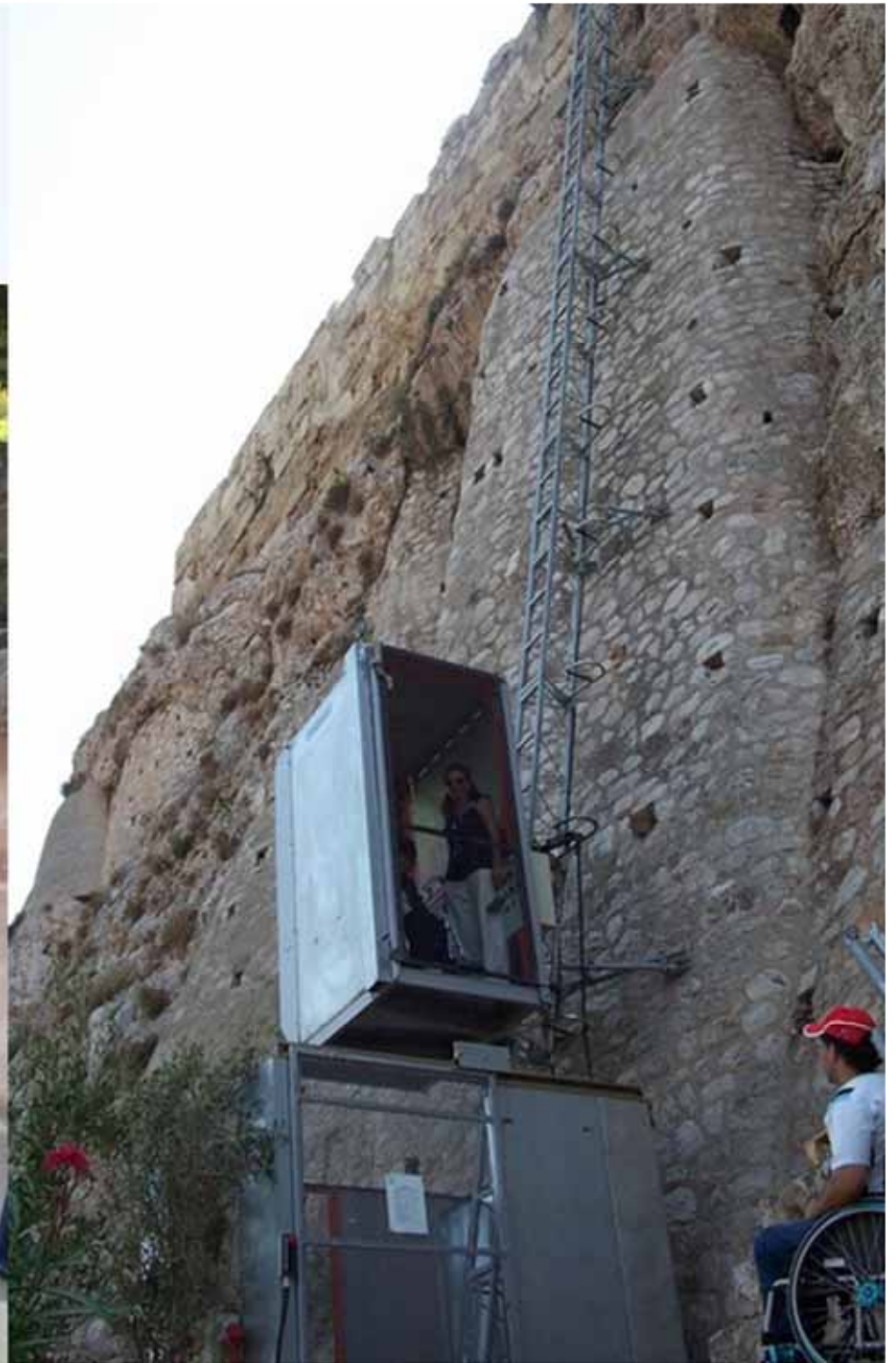
Existing Venues



Accessible London: Southbank



Athens



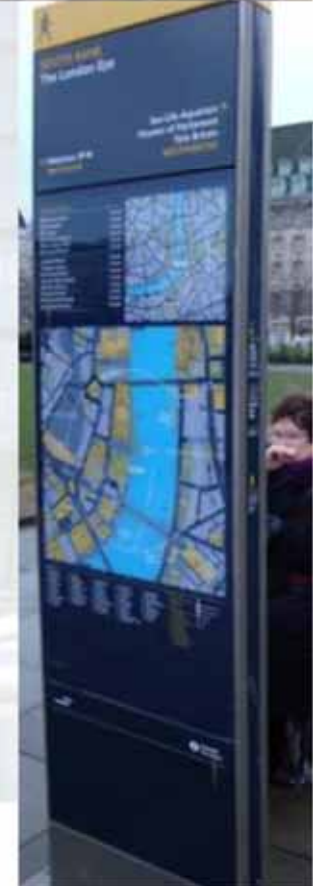
Beijing



Southbank

Planned Improvements

- Walking surfaces
 - Raise road levels
 - Improve tree pits
 - Improve seating
 - Lighting
 - Signage
- Improve/ remove barriers to access



Southbank

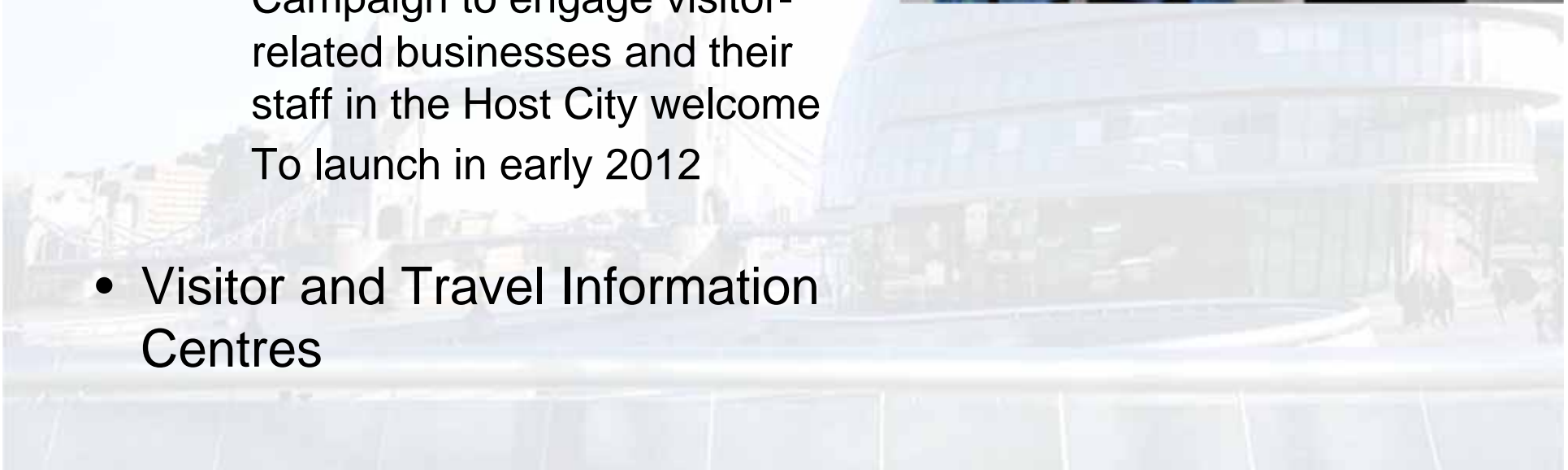
Priority areas

- Princes Walk to Oxo Tower
- Oxo Tower to Bernie Spain Gardens
- Falcon Point
- Tate River Walk
- Bankside to New Globe Walk
- Bank End/ Clink Street



Welcome to London

- Mobilise the capital to welcome visitors and Londoners
- Games Time Champions -
Recognising the role of uniformed staff
- Visitor facing businesses -
Campaign to engage visitor-related businesses and their staff in the Host City welcome
To launch in early 2012
- Visitor and Travel Information Centres



London Ambassadors

Current activity

- > 23,000 volunteers applicants
- Securing Pod locations
- Pod designs
- Developing Ambassador training

Next steps

- 10,000 successful applicants
to be informed in autumn 2011
- Training to start early 2012



London Events

- Cultural activities
- London Outdoor Touring Festival
- Hidden London
- Cultural Spectacular
- Paralympic Torch Relay
- Trafalgar Square Live Site:
- exclusive to the Paralympics
- Potters Field Live Site
- Pan London Liberty festival
- Building on the reputation and success of Liberty: the Mayor's Disability Arts Festival



Post Games

- Options to include the capital on closing ceremony day
- Team GB Olympic and Paralympic Athletes parade
- Proposed for 11 September



LONDON

INCLUSIVELONDON.COM



A message from the Mayor of London

Search Add My Location Inclusive Britain Reviews GLA Press Release

Members Login

Homepage

Search for :

e.g. Bank, Hotel

Located in :

e.g. Covent Garden or SW1

Search

View On Map

Filter your results by their accessible features



Featured Locations



Accessible Hotels

Hotels in London



Accessible Restaurants

Restaurants in London



Accessible Pubs

Accessible pubs in London



Olympic and Paralympic Venues



Accessible Toilets

Accessible Toilets in London



Entertainment

Entertainment in London



Accessible Healthcare

Healthcare in London



Shopping

Shopping in London



Attractions and Parks

Located in London



Police Stations

Police Stations in London



Post Office

Post Offices In London



Accessible Banks

Banks in London



Can't find your location or business? Why not add it.

Add my location



Share with others the places you have visited and would recommend.

Reviews



Want to search further than London? Visit Inclusive Britain.

Inclusive Britain



Tag your favourite locations, interact and share with other members.

My Networks

Is your business on www.InclusiveLondon.com?

- inform a new customer base about the accessibility of your service
- ~ 2 million hits since launch
- 35,000 businesses in London listed.

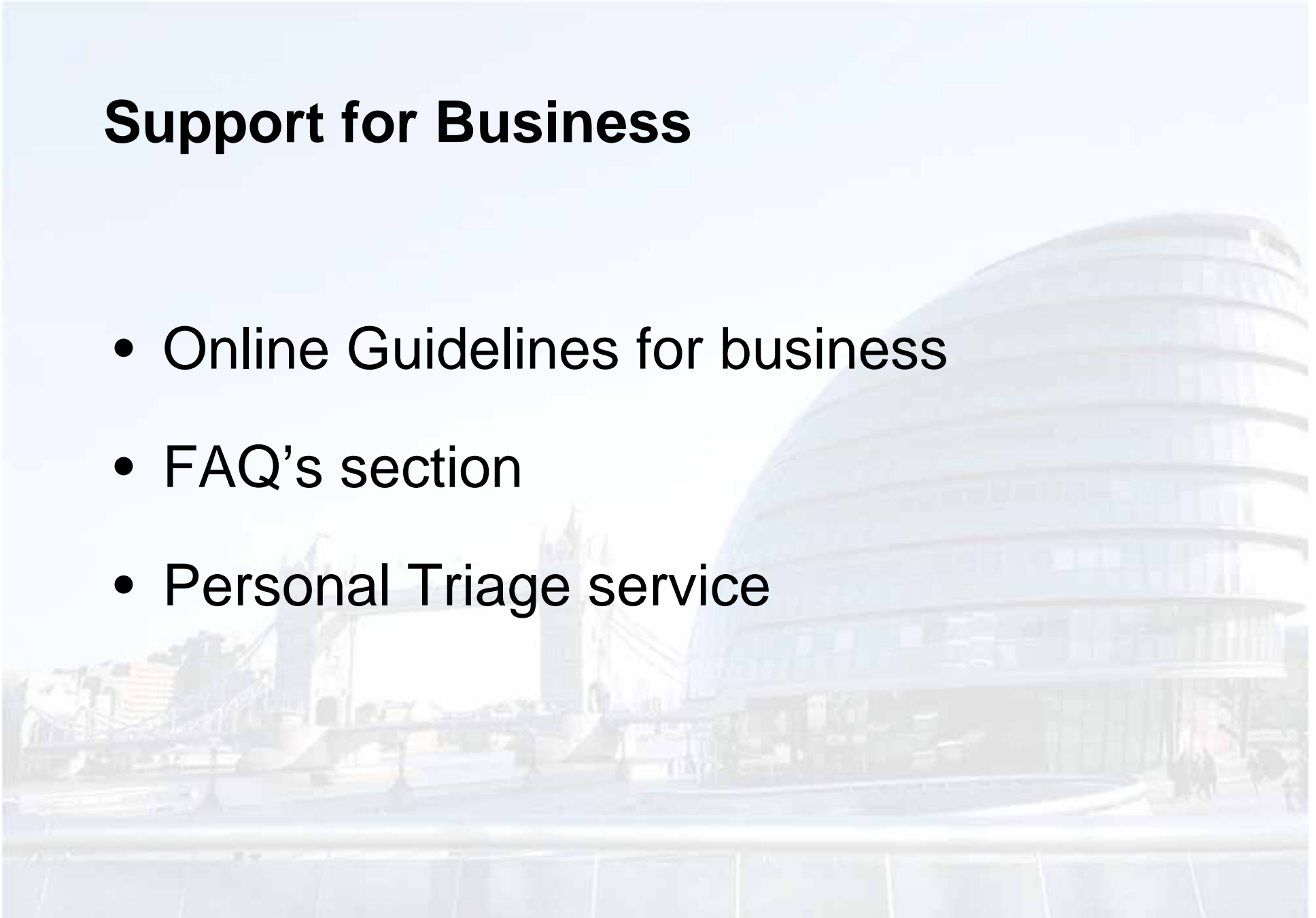
E learning

Aims is to improve visitor experience

- Free to business
- Online
- Cost effective
- Modules for managers and front line staff
- Delivering quality inclusive service
- Available in late autumn

Support for Business

- Online Guidelines for business
- FAQ's section
- Personal Triage service



Accessibility and Inclusive Design

approach, parking, arrival, circulation, facilities, task lighting, noise, comfort, meeting, spaces, security features, refreshment, toilet facilities, storage, computers, telephones, orientation, ironmongery, vision panels, manifestations, closers, holdbacks, automatic openers, mats, power assisted openers, security, locks, keypads, access controls, heights & colour contrast, windows, handles. glare, blinds, curtains, soft furnishings, clocks, gradients, bridges, ramps, handrails, steps, dog spending areas, shared surfaces, Information systems, switches, sockets, fixing heights, reaching distances, controls, adjustments, screens, location visibility, sound assistive systems, spaces for signers, lip speakers, video displays, notice boards, lighting, reflection, shadows, easy access seats, amenity seats, lighting, ticketing, media spaces, broadcast lights, shade, exterior lighting. daylight, ventilation, air conditioning, temperature control, background noise, vibration, décor materials & flooring, textures colour contrast & acoustic properties, furniture design, location, handles, wheelchair user spaces numbers and locations, seat design, emergency alarms (visual and audible), storage, shop layout, display, restaurant, food display, menu display, vending machines, size of toilets and showers, distance to toilets, alarm location, flush handles, paper towel provision, sanitary vending/disposal, room numbering,, art, labelling lighting, tactile displays, plants & landscaping, textures/ tactile warnings, bollards, lighting, crossings, bus stops, transport systems, route display, assistance dog provision, loan wheelchairs Games mobility service, signage, Braille signs, refuge signs, exit routes, emergency egress, bomb threats, security searches, metal detectors. Faith provision, single sex accessible toilets, Accessible wc with adult change, building information in printed and other accessible formats, management , maintenance and

Legacy