

PREVENTION OF LIMB LOSS: The role of Interventional vascular radiology



Dr Keith Blanshard
consultant vascular radiologist
University Hospitals of Leicester NHS Trust

Vascular interventional radiologist

- Member, Medical Technologies Advisory Committee, NICE
- Member, innovative Technology Adoption Procurement Programme

Previously:

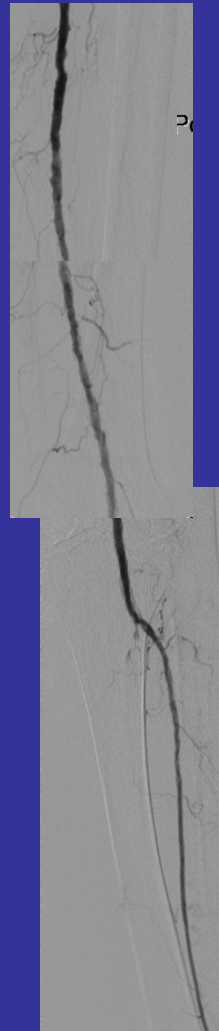
- Associate Medical Director, Clinical effectiveness
- Clinical director of (sequentially)
 - Imaging
 - Medicine and Emergency Department
 - Childrens Services

Dr Keith Blanshard
consultant vascular radiologist
University Hospitals of Leicester NHS Trust

Before



After



Lower limb angioplasty 2011

87 yr old lady
toe gangrene
Back pain
Short of breath lying flat

- Sub-intimal angioplasty
- Below knee small artery angioplasty
- 45-90 minute procedure
- Limb salvage for critical ischaemia

New technologies have been key

- Hydrophilic wires
- Low profile balloons
- Stents
- Adjuvant drugs
- Closure devices

How good is subintimal angioplasty?

- Technical success 86%
- Primary patency rate at 12 months 56%
- Limb salvage at 12 months 89%




Good outcomes, consider as alternative to bypass surgery



Interventional vascular radiology provision: national variation

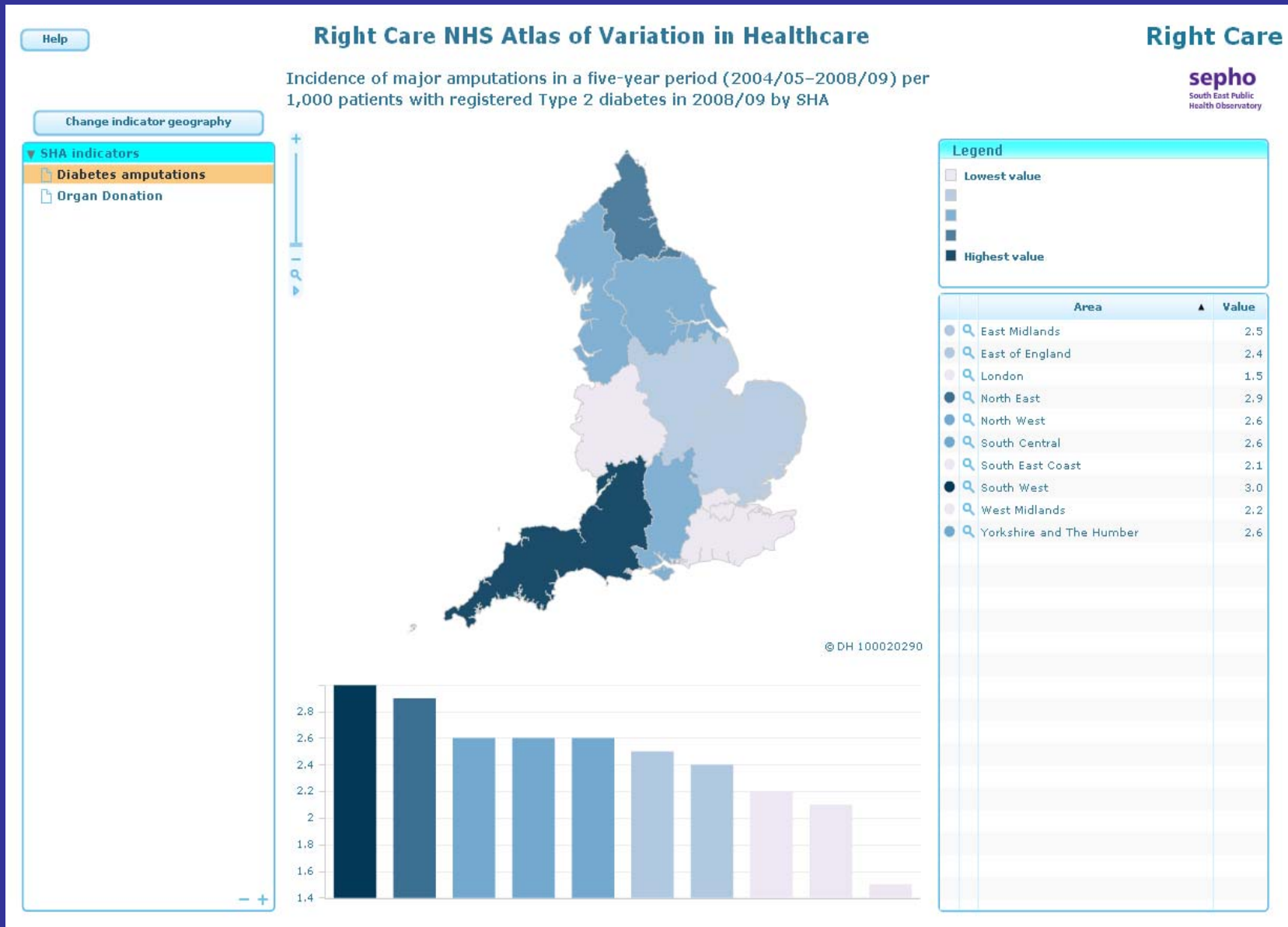
- Less than 25% of acute trusts have a dedicated vascular interventional radiology on call service
 - *(We have 5 on 1:5 on call 24/7)*
- Radiology tariff funding – very difficult to articulate a business case for expansion
- Variation in sub-intimal angioplasty provision
- Variation in day case and outpatient provision

Prevention of limb loss: is there a problem?

| 2011 | General population | Diabetic population | Amputations |
|--|--------------------|---------------------|----------------|
|  | 81.4 million | 9.6 million (12%) | 20,450 (0.21%) |
|  | 61 million | 5.3 million (9%) | 8,400 (0.16%) |
|  | 62 million | 3.3 million (5%) | 8344 (0.26%) |

UK amputation rate 38% higher than Italy and 17% higher than Germany

Manage variation: NHS Atlas of Variation at www.rightcare.nhs.uk



Limb loss

- Variation at European level:
The UK amputation rate is
 - 38% higher than Italy
 - 17% higher than Germany
- There is significant variation in amputation rate within the UK (x 2 between worst and best SHA)

Conclusion

1. There is European and national variation in amputation rates
 - National adoption of best IR and vascular surgery practice
 - Ensure equal access to best interventional radiology
 - Develop the multi-disciplinary team including vascular radiologists
2. We have an excellent limb salvage treatment in angioplasty
 - But need robust interventional vascular radiology provision 24/7
3. Change the way we deliver healthcare rather than in the technologies

UK

“Why do we admit for a 1-hour procedure: Do we need a future model for out patient angioplasty with duplex USS, analgesia and tissue viability care in the community at home to support the angioplasty intervention?”

keith.blanshard@uhl-tr.nhs.uk